



ROYAL CANIN®

INCREDIBLE IN EVERY DETAIL

FELINE HEALTH NUTRITION

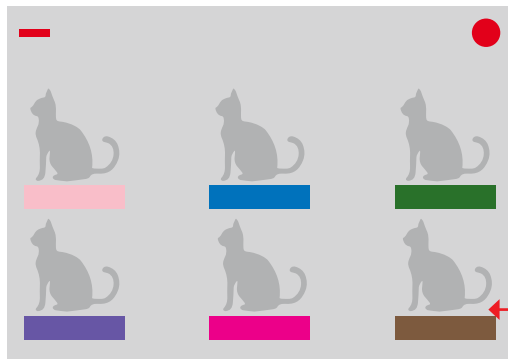
PRODUCT BOOK



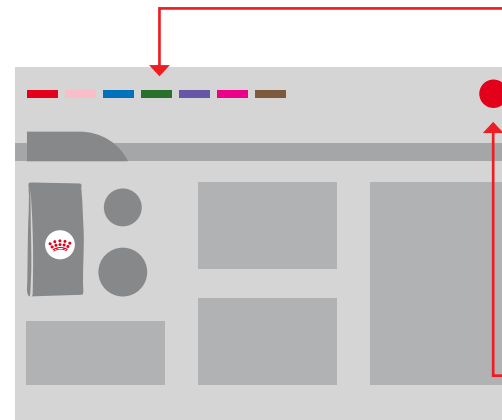
HOW TO USE THIS DOCUMENT

NAVIGATION:

Elements of this document are clickable and you can use them to navigate through the document with ease.



You can click on each Feline Health Nutrition category on page 3 to jump to the start of that category.



You will also notice the names of each Feline Health Nutrition category on the top of the page. Click on these to skip to a different category in the document.

Click on the crown to jump back to the contents on page 3.

SOCIAL MEDIA:



At the end of this document, you will see a Facebook and YouTube icon that you can click on to view our respective pages.



CONTENTS





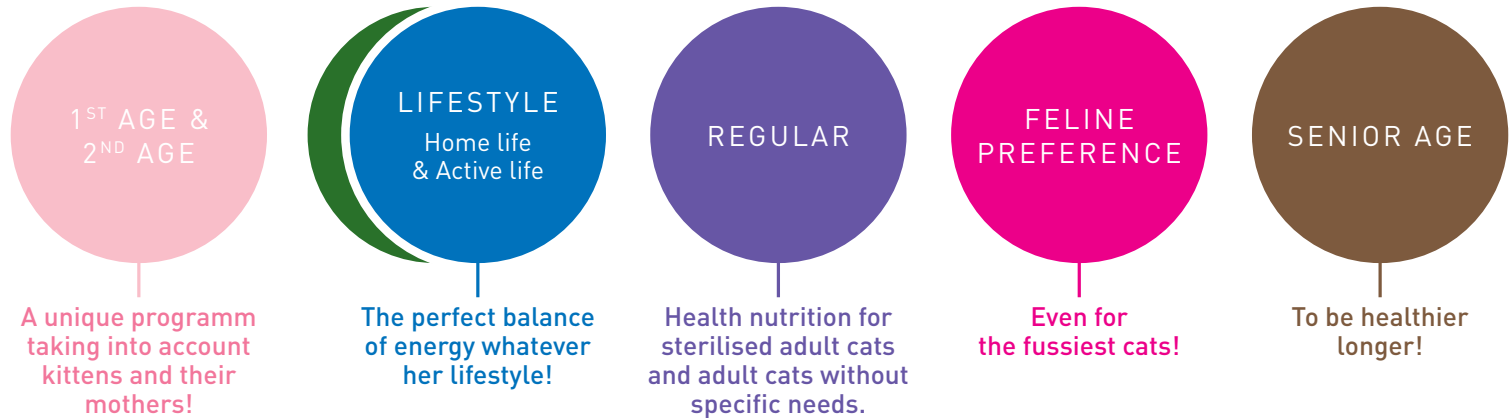
DAILY HEALTH NUTRITION FOR HEALTHY CATS



EACH CAT DESERVES HER OWN HEALTH NUTRITION

Each cat has specific needs depending **on her age, her lifestyle, and some individual characteristics**. Precise nutrition is essential for maintaining her health and well-being throughout her life.

Royal Canin has developed Feline Health Nutrition, a wide range of products **to meet the daily requirements of each individual cat**.





Babycat milk

From birth to weaning - 1st age milk



[300g box: 3 x 100g sachets]



HARMONIOUS GROWTH

For steady, harmonious growth, the composition of BABYCAT MILK is as close as possible to queen's milk.

DIGESTIVE HEALTH

BABYCAT MILK contains carefully selected ultra-digestible proteins, and has a lactose content very close to that of maternal milk. It is particularly suitable for the kitten's digestive system, because it does not contain starch, (kittens don't secrete enough enzyme to digest starch). The kitten's intestinal flora develops gradually over several weeks. The addition of probiotics (FOS) contributes to promoting digestive health.

INSTANT MILK

With its exclusive formula, BABYCAT MILK dissolves instantly and completely, with no sediment, creating a totally homogenous formula. (See the utilisation guide).

DHA

The kitten's nervous system continues to develop after birth. DHA naturally present in maternal milk supports the development of cognitive function.

INGREDIENTS

COMPOSITION

Milk proteins, milk fat, vegetable oils (including arachidonic acid-rich oil), whey protein, fish oil (source of DHA), minerals, fructo-oligo-saccharides.

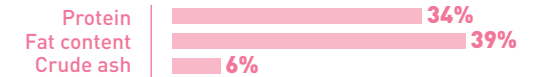
ADDITIVES (PER KG)

Nutritional additives: Vitamin A: 25000 IU, Vitamin D3: 1500 IU, E1 (Iron): 100 mg, E2 (Iodine): 4 mg, E4 (Copper): 15 mg, E5 (Manganese): 80 mg, E6 (Zinc): 230 mg, E8 (Selenium): 0.43 mg, Taurine: 2.5 g - Antioxidants.

FEEDING GUIDELINES

Age	Number of meals/kitten/day	ml of reconstituted milk/kitten/meal		Measuring spoon/kitten/meal	
		Min	Max	Min	Max
Week 1	7	2	4	1/10	2/10
Week 2	6	5	10	3/10	5/10
Week 3	5	10	15	5/10	8/10
Week 4	5	10	15	5/10	8/10

ANALYTICAL CONSTITUENTS



AMINO ACIDS			
Taurine (%)	0.25	Methionine (%)	1.20
Arginine (%)	1.90	Methionine + cystine (%)	1.46
Lysine (%)	2.44	L-Carnitine (mg/kg)	-

MINERALS			
Calcium (%)	1.10	Copper (mg/kg)	15
Phosphorus (%)	0.80	Iron (mg/kg)	100
Sodium (%)	0.30	Manganese (mg/kg)	80
Chloride (%)	0.60	Zinc (mg/kg)	230
Potassium (%)	0.67	Selenium (mg/kg)	0.43
Magnesium (%)	0.06	Iodine (mg/kg)	4

VITAMINS			
Vit. A (IU/kg)	25000	Vit. B6 (Pyridoxine) (mg/kg)	15
Vit. D3 (IU/kg)	1500	Vit. B12 (Cyanocobalamin) (mg/kg)	0.30
Vit. E (mg/kg)	600	Vit. B3 (Niacine) (mg/kg)	155
Vit. C (mg/kg)	300	Biotin (mg/kg)	1
Vit. B1 (Thiamin) (mg/kg)	20	Folic-acid (mg/kg)	3.20
Vit. B2 (Riboflavin) (mg/kg)	40	Choline (mg/kg)	3000
Vit. B5 (Pantothenic-acid) (mg/kg)	56		

OTHER GUARANTEES			
Lactose (%)	18.50	Arachidonic-acid (%)	0.03
Dietary fiber (%)	0.50	Omega-3 (%)	0.50
Linoleic-acid (%)	3.40	Omega-6 (%)	3.40
Lutein (mg/kg)	-	EPA + DHA (%)	0.15

CALCULATED METABOLISABLE ENERGY			
Energy (NRC 85) (kcal/kg)	5135	Energy (NRC 2006) (kcal/kg)	5426



First Age MOTHER & BABYCAT

Gestating / lactating queens and 1 to 4 month old kittens



[Available in 400g - 2kg - 4kg]



REHYDRATABLE



IMMUNE SYSTEM SUPPORT

Between 4 and 12 weeks after birth, the natural immunity acquired from the mother's colostrum decreases gradually. **MOTHER & BABYCAT** helps support the 1st age kitten's natural defences thanks particularly to a patented* complex of antioxidants including vitamin E.

*France, patent No EP1146870



SPECIAL EASY WEANING

Adapted kibble that can be easily rehydrated to facilitate the transition from milk to solid food.



DIGESTIVE HEALTH

Enhanced digestive tolerance thanks to highly digestible protein (L.I.P.*) and prebiotics (including FOS).

*Protein selected for its very high digestibility



Enriched with DHA

DHA helps support the kitten's cerebral development during gestation and lactation.

INGREDIENTS

COMPOSITION

Dehydrated poultry protein, animal fats, maize flour, rice, vegetable protein isolate*, hydrolysed animal proteins, yeasts and parts thereof, fish oil, beet pulp, vegetable fibres, soya oil, minerals, fructo-oligo-saccharides (0,35%), hydrolysed yeast (source of manno-oligo-saccharides), yeasts extracts (source of betagluconans), marigold extract (source of lutein).

ADDITIVES (PER KG)

Nutritional additives: Vitamin A: 25500 IU, Vitamin D3: 1000 IU, Vitamin E: 600 mg, E1 (Iron): 31,8 mg, E2 (Iodine): 3,2 mg, E4 (Copper): 9,8 mg, E5 (Manganese): 41,4 mg, E6 (Zinc): 118,1 mg, E8 (Selenium): 0,04 mg - Technological additives: Clinoptilolite of sedimentary origin: 5 g - Preservatives - Antioxidants.

*L.I.P.: protein selected for its very high assimilation.

FEEDING GUIDELINES

24H Recommended daily quantities ** Chatta gestante / Gata gestante / Gatta in gestazione
** Chatta allattante / Gata lattante / Gatta in allattamento

Kitten's age	Kitten's weight				Gestating queen* Queen's weight 4 kg
	1 month	2 months	3 months	4 months	
	0.4 kg	1 kg	1.3 kg	2 kg	
	26g	45g	57g	81g	62-96g OR 16-50g
	+1/2	+1/2	+1	+1	Mother & Babycat Nursing queen**: Ad libitum

Kibbles only
Croquettes seules
Solo croquettes
Solo crocchette OR Kibbles + can
"Royal Canin Mother & Babycat mousse"
Croquettes + boite "Royal Canin Mother & Babycat mousse"
Croquettes + lata de "Royal Canin Mother & Babycat mousse"
Crocchette + lattina de "Royal Canin Mother & Babycat mousse" Water - Eau
Agua
Acqua

*Taking into account cats' weight

ANALYTICAL CONSTITUENTS

Protein	34%
Fat content	25%
Crude fiber	1.9%
Crude ash	7.4%
NFE	26.2%

AMINO ACIDS			
Taurine (%)	0.28	Methionine (%)	0.74
Arginine (%)	1.87	Methionine + Cysteine (%)	1.2
Lysine (%)	1.75	Tryptophane (%)	-

MINERALS			
Calcium (%)	1.22	Copper (mg/kg)	15
Phosphorus (%)	1.03	Iron (mg/kg)	161
Sodium (%)	0.5	Manganese (mg/kg)	54
Chloride (%)	0.94	Zinc (mg/kg)	160
Potassium (%)	0.85	Selenium (mg/kg)	0.35
Magnesium (%)	0.12	Iodine (mg/kg)	3.8
Sulphur (%)	0.4		

VITAMINS			
Vit. A (IU/kg)	28500	Vit. B6 (Pyridoxine) (mg/kg)	48
Vit. D3 (IU/kg)	1000	Vit. B12 (Cyanocobalamin) (mg/kg)	0.18
Vit. E (mg/kg)	600	Vit. B3 (Niacine) (mg/kg)	235.9
Vit. C (mg/kg)	300	Biotin (mg/kg)	3.58
Vit. B1 (Thiamin) (mg/kg)	17.8	Folic acid (mg/kg)	13.1
Vit. B2 (Riboflavin) (mg/kg)	67.5	Choline (mg/kg)	3700
Vit. B5 (Pantothenic acid) (mg/kg)	68.8		

OTHER GUARANTEES			
Starch (%)	21.7	Omega 6 (%)	5.5
Dietary fiber (%)	6.4	Omega 3 (%)	1.37
Lutein (mg/kg)	5.5	EPA + DHA (%)	0.5
Betacaroten (mg/kg)	5.5	L-carnitine (mg/kg)	50
Arachidonic acid (%)	0.14	Glucosamine + Chondroitin (mg/kg)	-
Linoleic acid (%)	5.27		

CALCULATED METABOLISABLE ENERGY			
Energy_NRC 85 (kcal/kg)	4232	Energy_NRC 2006 (CF) (kcal/kg)	4424



MOTHER & BABYCAT

Mothers & 1st age kittens from weaning up to 4 months old (1-4 months)



1st AGE EASY START

1st AGE EASY START

For 1st age kittens, the «mousse» texture of MOTHER & BABYCAT facilitates the transition to solid food.



INSTINCTIVELY PREFERRED

Formulated to match the optimal Macro Nutritional Profile instinctively preferred by kittens.



IMMUNE SYSTEM SUPPORT

Helps support the 1st age kitten's natural defences.

INGREDIENTS

COMPOSITION

Meat and animal derivatives, cereals, oils and fats, derivatives of vegetable origin, milk and milk derivatives, minerals, yeasts, various sugars.

ADDITIVES (PER KG)

Nutritional additives: Vitamin D3: 130 IU, E1 (Iron): 5 mg, E2 (Iodine): 0.37 mg, E4 (Copper): 3 mg, E5 (Manganese): 1.5 mg, E6 (Zinc): 15 mg.

ANALYTICAL CONSTITUENTS

Protein	10.5%
Fat content	5.5%
Crude fibres	0.9%
Crude ash	1.9%

AMINO ACIDS			
Taurine (%)	0.12	Methionine (%)	0.25
Arginine (%)	0.55	Methionine + cystine (%)	0.4
Lysine (%)	0.65		

MINERALS			
Calcium (%)	0.29	Copper (mg/kg)	3.5
Phosphorus (%)	0.27	Iron (mg/kg)	30
Sodium (%)	0.14	Manganese (mg/kg)	2.5
Chloride (%)	0.14	Zinc (mg/kg)	25
Potassium (%)	0.2	Selenium (mg/kg)	0.3
Magnesium (%)	0.018	Iodine (mg/kg)	0.5

VITAMINS			
Vit. A (IU/kg)	40000	Vit. B6 (Pyridoxine) (mg/kg)	1.2
Vit. D3 (IU/kg)	160	Vit. B12 (Cyanocobalamin) (mg/kg)	0.01
Vit. E (mg/kg)	150	Vit. B3 (Niacine) (mg/kg)	20
Vit. C (mg/kg)	47	Biotin (mg/kg)	0.04
Vit. B1 (Thiamin) (mg/kg)	2	Folic acid (mg/kg)	0.5
Vit. B2 (Riboflavin) (mg/kg)	2	Choline (mg/kg)	830
Vit. B5 (Pantothenic-acid) (mg/kg)	5		

OTHER GUARANTEES			
Starch (%)	-	Omega-3 (%)	0.18
Dietary fiber (%)	1.3	EPA + DHA (%)	0.09
Linoleic acid (%)	1	L-Carnitine (mg/kg)	12
Arachidonic acid (%)	0.04	Lutein (mg/kg)	1.2
Omega-6 (%)	1.5	Glucosamine + Chondroitine (mg/kg)	-

CALCULATED METABOLISABLE ENERGY			
Energy (NRC 85) (kcal/kg)	912	Energy (NRC 2006) (kcal/kg)	1039

FEEDING GUIDELINES

24H Feeding instructions

Age in weeks	100% = 195g	50% = 98g + (g) Kibbles*
4	Introduce food gradually	-
8	3/4 - 1	1/2 + 15 - 30 g
12	1 - 1 1/2	+ 25 - 45 g
16	1 1/4 - 1 1/2 or kitten	+ 30 - 50 or kitten**
Lactating queen	on demand	Lactating queen on demand

Water

*ROYAL CANIN® "Mother & Baby cat"
**ROYAL CANIN® "Kitten"



Second Age
KITTEN

Kittens up to 12 months old



[Available in 400g - 2kg - 4kg - 10kg]



IMMUNE SYSTEM SUPPORT

Growth is an essential stage in the kitten's life: it is the time of big changes, discoveries and new encounters. During this key period, the kitten's immune system develops gradually. **KITTEN** helps support the 2nd age kitten's natural defences thanks particularly to a patented* complex of antioxidants including vitamin E.

*France, patent No EP1146870



DIGESTIVE HEALTH

Enhanced digestive tolerance thanks to highly digestible protein (L.I.P.*) and prebiotics (including FOS).
*Protein selected for its very high digestibility



HEALTHY GROWTH

Adapted content of protein, vitamins and minerals including vitamin D and calcium. High energy content to fit this intense growth period.



L.I.P.

Selected protein with digestibility over 90% (Royal Canin).

INGREDIENTS

COMPOSITION

Dehydrated poultry protein, rice, vegetable protein isolate*, animal fats, maize flour, hydrolysed animal proteins, wheat flour, maize gluten, yeasts and parts thereof, beet pulp, vegetable fibres, fish oil, soya oil, minerals, fructo-oligo-saccharides (0,38%), psyllium husks and seeds, hydrolysed yeast (source of manno-oligo-saccharides), yeasts extracts (source of betaglucans), marigold extract (source of lutein).

ADDITIVES (PER KG)

Nutritional additives: Vitamin A: 21500 IU, Vitamin D3: 800 IU, Vitamin E: 600 mg, E1 (Iron): 32,3 mg, E2 (Iodine): 3,2 mg, E4 (Copper): 9,9 mg, E5 (Manganese): 42 mg, E6 (Zinc): 116,5 mg, E8 (Selenium): 0,05 mg - Technological additives: Clinoptilolite of sedimentary origin: 10 g - Preservatives - Antioxidants.

*L.I.P.: protein selected for its very high assimilation.

FEEDING GUIDELINES

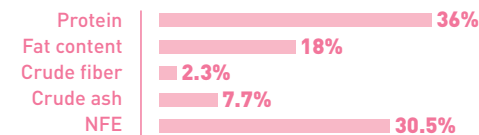
24H Recommended daily quantities *progressive decrease

Kitten's age	1 → 2 months	3 → 4 months	5 → 6 months	7 → 12 months
	Kitten's weight			
kg	0.4 kg - 1 kg	1.3 kg - 2 kg	2.3 kg - 2.9 kg	3.1 kg - 4 kg
	29 - 46 g	4 - 23 g	61 - 66 g	11 - 16 g
	69 - 67 g*	48 - 46 g	64 - 51 g*	43 - 29 g*

Kibbles only / Solo crocchette / Solo croquettes / Ausschließlich Trockenahrung
 OR / O / OSES
 Kibbles - Crocchette / Croquettes - Trockenmahlung / Royal Canin Mother & Babycat mousses*
 OR / O / OSES
 Kibbles - Crocchette / Croquettes - Trockenmahlung / Pouch - ballina - sabbia - Frischbeutel / Royal Canin Kitten*
 water-Acqua / Agua / Wasser

*Taking into account cats' weight

ANALYTICAL CONSTITUENTS



AMINO ACIDS			
Taurine (%)	0.25	Methionine (%)	0.72
Arginine (%)	1.82	Methionine + Cysteine (%)	1.2
Lysine (%)	1.48	Tryptophane (%)	-

MINERALS			
Calcium (%)	1.2	Copper (mg/kg)	15
Phosphorus (%)	1.09	Iron (mg/kg)	199
Sodium (%)	0.5	Manganese (mg/kg)	57
Chloride (%)	0.85	Zinc (mg/kg)	159.9
Potassium (%)	0.8	Selenium (mg/kg)	0.38
Magnesium (%)	0.1	Iodine (mg/kg)	3.7
Sulphur (%)	0.4		

VITAMINS			
Vit. A (IU/kg)	24500	Vit. B6 (Pyridoxine) (mg/kg)	42.4
Vit. D3 (IU/kg)	800	Vit. B12 (Cyanocobalamin) (mg/kg)	0.15
Vit. E (mg/kg)	600	Vit. B3 (Niacine) (mg/kg)	193.4
Vit. C (mg/kg)	300	Biotin (mg/kg)	3.23
Vit. B1 (Thiamin) (mg/kg)	14.2	Folic acid (mg/kg)	12.2
Vit. B2 (Riboflavin) (mg/kg)	54.3	Choline (mg/kg)	3400
Vit. B5 (Pantothenic acid) (mg/kg)	56.9		

OTHER GUARANTEES			
Starch (%)	25.6	Omega 6 (%)	4.1
Dietary fiber (%)	7.2	Omega 3 (%)	0.84
Lutein (mg/kg)	5	EPA + DHA (%)	0.3
Betacaroten (mg/kg)	5	L-carnitine (mg/kg)	50
Arachidonic acid (%)	0.09	Glucosamine + Chondroitin (mg/kg)	-
Linoleic acid (%)	3.88		

CALCULATED METABOLISABLE ENERGY			
Energy_NRC 85 (kcal/kg)	3858	Energy_NRC 2006 (CF) (kcal/kg)	4087



KITTEN

Kittens up to 12 months old



GRAVY

INGREDIENTS

COMPOSITION

Meat and animal derivatives, cereals, vegetable protein extracts, derivatives of vegetable origin, minerals, oils and fats, yeasts, various sugars.

ADDITIVES (PER KG)

Nutritional additives: Vitamin D3: 175 IU, E1 (Iron): 4 mg, E2 (Iodine): 0.36 mg, E4 (Copper): 2.8 mg, E5 (Manganese): 1.3 mg, E6 (Zinc): 13 mg.

ANALYTICAL CONSTITUENTS

Protein	12%
Fat content	4%
Crude fibres	0.9%
Crude ash	1.8%

AMINO ACIDS			
Taurine (%)	0.11	Methionine (%)	0.25
Arginine (%)	0.6	Methionine + cystine (%)	0.4
Lysine (%)	0.55		

MINERALS			
Calcium (%)	0.31	Copper (mg/kg)	4
Phosphorus (%)	0.25	Iron (mg/kg)	30
Sodium (%)	0.16	Manganese (mg/kg)	3
Chloride (%)	0.13	Zinc (mg/kg)	25
Potassium (%)	0.23	Selenium (mg/kg)	0.3
Magnesium (%)	0.022	Iodine (mg/kg)	0.5

VITAMINS			
Vit. A (IU/kg)	45000	Vit. B6 (Pyridoxine) (mg/kg)	1
Vit. D3 (IU/kg)	200	Vit. B12 (Cyanocobalamin) (mg/kg)	0.015
Vit. E (mg/kg)	150	Vit. B3 (Niacine) (mg/kg)	20
Vit. C (mg/kg)	45	Biotin (mg/kg)	0.04
Vit. B1 (Thiamin) (mg/kg)	2	Folic acid (mg/kg)	0.571
Vit. B2 (Riboflavin) (mg/kg)	2	Choline (mg/kg)	800
Vit. B5 (Pantothenic-acid) (mg/kg)	5		

OTHER GUARANTEES			
Starch (%)	-	Omega-3 (%)	0.15
Dietary fiber (%)	1.1	EPA + DHA (%)	0.1
Linoleic acid (%)	0.5	L-Carnitine (mg/kg)	12.5
Arachidonic acid (%)	0.05	Lutein (mg/kg)	1.2
Omega-6 (%)	0.8	Glucosamine + Chondroitine (mg/kg)	-

CALCULATED METABOLISABLE ENERGY			
Energy (NRC 85) (kcal/kg)	876	Energy NRC 2006 TDF (kcal/kg)	1031



IMMUNE SYSTEM SUPPORT

Helps support the 2nd age kitten's natural defences by maintaining health.



EASY CHEWING

Small chunks in gravy.



INSTINCTIVELY PREFERRED

Formulated to match the optimal Macro Nutritional Profile instinctively preferred by kittens.

FEEDING GUIDELINES

24H Feeding instructions

Age	Pouches only		OR		Kibbles*	
	1 pouch	2 pouches	1 pouch	2 pouches	1 pouch	2 pouches
1,5	1 + 1/2	2	1	2	15 - 25 g	20 - 35 g
2	2	2 + 1/2	1	3	30 - 50 g	35 - 60 g
3	2 + 1/2	3 + 1/2	1	4	35 - 60 g	35 - 60 g
4	2 + 1/2	3 + 1/2	1	4	25 - 40 g	35 - 60 g
6	2 + 1/2	3 + 1/2	1	4	35 - 60 g	35 - 60 g
9-12	2	3	1	4	70 - 115 g	70 - 115 g
Gestating queen	3 kg	2 + 1/2 - 4	1	4	35 - 60 g	35 - 60 g
	5 kg	4 + 1/2 - 6 + 1/2	1	4	70 - 115 g	70 - 115 g

Water

* ROYAL CANIN® "Kitten"



Second Age
**KITTEN
Sterilised**

Neutered kittens 6 to 12 months old



[Available in 400g, 2kg, 3,5kg]



IMMUNE SYSTEM SUPPORT

Growth is an essential stage in the kitten's life: it is the time of big changes, discoveries and new encounters. During this key period, the kitten's immune system develops gradually. **KITTEN STERILISED** helps support the 2nd age kitten's natural defences thanks particularly to a patented* complex of antioxidants including vitamin E.

*France, patent N° EP1146870



GROWTH & WEIGHT CONTROL

This formula contains a moderate level of fat to help limit weight gain with no compromise on the intake of protein, calcium, and phosphorus for a healthy growth.



DIGESTIVE HEALTH

Enhanced digestive tolerance thanks to highly digestible protein (L.I.P.*) and prebiotics (including FOS).

*Protein selected for its very high digestibility



URINARY HEALTH

Formulated to help maintain health of an adult cat's urinary system.

INGREDIENTS

COMPOSITION

Dehydrated poultry protein, vegetable fibres, vegetable protein isolate*, wheat flour, hydrolysed animal proteins, animal fats, maize flour, rice, maize, maize gluten, beet pulp, soya oil, yeasts and parts thereof, fish oil, minerals, fructo-oligo-saccharides (0,36%), psyllium husks and seeds, hydrolysed yeast (source of manno-oligo-saccharides), yeasts extracts (source of betaglucans), marigold extract (source of lutein).

ADDITIVES (PER KG)

Nutritional additives: Vitamin A: 20500 IU, Vitamin D3: 800 IU, Vitamin E: 600 mg, E1 (Iron): 31,2 mg, E2 (Iodine): 3,1 mg, E4 (Copper): 9,6 mg, E5 (Manganese): 40,5 mg, E6 (Zinc): 116,9 mg, E8 (Selenium): 0,04 mg - Technological additives: Clinoptilolite of sedimentary origin: 10 g - Preservatives - Antioxidants.

*L.I.P.: protein selected for its very high assimilation.

FEEDING GUIDELINES

24H Recommended daily quantities

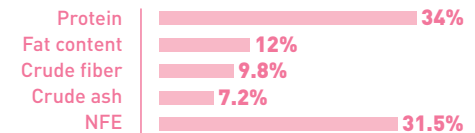
Kitten's age	6 → 9 months	10 → 12 months
kg	Kitten's weight	
	2.9 kg - 3.6 kg	3.7 kg - 4 kg
	79 g - 88 g	57 g - 46 g*
	OR	OR
	79 g - 88 g	65 g - 60 g*
	OR	OR
	79 g - 88 g	43 g - 38 g*

If you have any concerns about feeding your kitten consult your veterinarian. Si vous avez des questions sur l'alimentation de votre chaton, consultez votre vétérinaire. Se hai dubbi in merito all'alimentazione del tuo gattino, consulta il veterinario. Si tiene preguntas relacionadas con la alimentación de su gatito, consúltele con su veterinario. * progressive decrease

Kibbles only
Croquettes seules
Solo crocchette
Sólo croquetas OR Kibbles + pouch "Royal Canin Kitten sterilised"
Croquettes + sachet "Royal Canin Kitten sterilised"
Crocchettes + bustina "Royal Canin Kitten sterilised"
Crocquetas + sobre "Royal Canin Kitten sterilised" Water - Eau
Acqua
Agua

*Taking into account cats' weight

ANALYTICAL CONSTITUENTS



AMINO ACIDS			
Taurine (%)	0.23	Methionine (%)	0.77
Arginine (%)	1.64	Methionine + Cysteine (%)	1.24
Lysine (%)	1.35	Tryptophane (%)	-

MINERALS			
Calcium (%)	0.99	Copper (mg/kg)	15
Phosphorus (%)	0.95	Iron (mg/kg)	194.1
Sodium (%)	0.6	Manganese (mg/kg)	60
Chloride (%)	0.94	Zinc (mg/kg)	159.9
Potassium (%)	0.7	Selenium (mg/kg)	0.33
Magnesium (%)	0.07	Iodine (mg/kg)	3.5
Sulphur (%)	0.4		

VITAMINS			
Vit. A (IU/kg)	23500	Vit. B6 (Pyridoxine) (mg/kg)	41
Vit. D3 (IU/kg)	800	Vit. B12 (Cyanocobalamin) (mg/kg)	0.14
Vit. E (mg/kg)	600	Vit. B3 (Niacine) (mg/kg)	173.8
Vit. C (mg/kg)	300	Biotin (mg/kg)	3.14
Vit. B1 (Thiamin) (mg/kg)	13.3	Folic acid (mg/kg)	12
Vit. B2 (Riboflavin) (mg/kg)	50.3	Choline (mg/kg)	3000
Vit. B5 (Pantothenic acid) (mg/kg)	54		

OTHER GUARANTEES			
Starch (%)	22.3	Omega 6 (%)	2.86
Dietary fiber (%)	19	Omega 3 (%)	0.55
Lutein (mg/kg)	5	EPA + DHA (%)	0.2
Betacaroten (mg/kg)	5	L-carnitine (mg/kg)	200
Arachidonic acid (%)	0.07	Glucosamine + Chondroitin (mg/kg)	-
Linoleic acid (%)	2.7		

CALCULATED METABOLISABLE ENERGY			
Energy_NRC 85 (kcal/kg)	3313	Energy_NRC 2006 (CF) (kcal/kg)	3487



Regular
FIT₃₂

Adult cats at maintenance



[Available in 400g - 2kg - 4kg - 10kg - 15kg]



OPTIMAL NUTRIENT PROFILE

To meet all the requirements of adulthood, cats need nutrition of a high quality. **FIT 32** contains the right level of beneficial nutrients to maintain adult cats in good health.



HEALTHY WEIGHT

Adjusted calorie content to help maintain the ideal weight of adult cats.



HAIRBALL REDUCTION

Helps stimulate the elimination of ingested hair thanks to specific fibres.



URINARY HEALTH

Formulated to help maintain health of an adult cat's urinary system.

INGREDIENTS

COMPOSITION

Dehydrated poultry protein, rice, wheat, maize, animal fats, dehydrated pork protein, vegetable fibres, wheat flour, hydrolysed animal proteins, maize gluten, yeasts and parts thereof, beet pulp, soya oil, fish oil, minerals, psyllium husks and seeds, hydrolysed yeast (source of manno-oligo-saccharides), marigold extract (source of lutein).

ADDITIVES (PER KG)

Nutritional additives: Vitamin A: 13000 IU, Vitamin D3: 700 IU, E1 (Iron): 35 mg, E2 (Iodine): 3,5 mg, E4 (Copper): 11 mg, E5 (Manganese): 45 mg, E6 (Zinc): 136 mg, E8 (Selenium): 0.09 mg - Zootechnical additives: Ammonium chloride: 5 g - Preservatives - Antioxidants.

*L.I.P. : protein selected for its very high assimilation.

FEEDING GUIDELINES

- 24H - Recommended daily quantities

Cat's weight	3 kg	4 kg	5 kg	6 kg
IDEAL WEIGHT	44g 26g + 1 sachet	54g 36g + 1 sachet	63g 45g + 1 sachet	72g 54g + 1 sachet
OVERWEIGHT	35g 17g + 1 sachet	43g 25g + 1 sachet	51g 32g + 1 sachet	58g 39g + 1 sachet

Kibbles only: Croquettes Seules / Ausschließlich Trockenration / Solo crocchette
 +1 sachet = 10g
 Kibbles + 1 pouch "Royal Canin Instinctive": Croquettes + 1 sachet "Royal Canin Instinctive" / Trockenration + 1 Frischbeutel, Royal Canin Instinctive / Crocchette + 1 bustino "Royal Canin Instinctive"

*Taking into account cats' weight

ANALYTICAL CONSTITUENTS

Protein	32%
Fat content	15%
Crude fibres	4.6%
Crude ash	7.2%
NFE	35.7%

AMINO ACIDS			
Taurine (%)	0.2	Methionine (%)	0.69
Arginine (%)	1.98	Methionine + cystine (%)	1.05
Lysine (%)	1.41		

MINERALS			
Calcium (%)	1.16	Copper (mg/kg)	15
Phosphorus (%)	1.1	Iron (mg/kg)	137
Sodium (%)	0.5	Manganese (mg/kg)	63
Chloride (%)	0.88	Zinc (mg/kg)	181
Potassium (%)	0.7	Selenium (mg/kg)	0.38
Magnesium (%)	0.09	Iodine (mg/kg)	4
Sulphur (%)	0.4		

VITAMINS			
Vit. A (IU/kg)	15000	Vit. B6 (Pyridoxine) (mg/kg)	20.2
Vit. D3 (IU/kg)	700	Vit. B12 (Cyanocobalamin) (mg/kg)	0.13
Vit. E (mg/kg)	510	Vit. B3 (Niacine) (mg/kg)	136.5
Vit. C (mg/kg)	200	Biotin (mg/kg)	1.29
Vit. B1 (Thiamin) (mg/kg)	12.2	Folic-acid (mg/kg)	3.3
Vit. B2 (Riboflavin) (mg/kg)	44.1	Choline (mg/kg)	3200
Vit. B5 (Pantothenic-acid)	41		

OTHER GUARANTEES			
Starch (%)	29.1	Omega-3 (%)	0.63
Dietary fiber (%)	11.2	Omega-6 (%)	3.46
Linoleic-acid (%)	3.26	EPA + DHA (%)	0.2
Arachidonic-acid (%)	0.08	Lutein (mg/kg)	5

CALCULATED METABOLISABLE ENERGY			
Energy (NRC 85) (kcal/kg)	3645	Energy (NRC 2006) (kcal/kg)	3839



INSTINCTIVE

Adult cats



GRAVY

INGREDIENTS

COMPOSITION

Meat and animal derivatives, fish and fish derivatives, vegetable protein extracts, cereals, derivatives of vegetable origin, minerals, various sugars.

ADDITIVES (PER KG)

Nutritional additives: Vitamin D3: 35 IU, E1 (Iron): 3 mg, E2 (Iodine): 0.35 mg, E4 (Copper): 2.8 mg, E5 (Manganese): 0.9 mg, E6 (Zinc): 9 mg.

ANALYTICAL CONSTITUENTS

Protein	12%
Fat content	2.8%
Crude fibres	0.9%
Crude ash	1.5%

AMINO ACIDS			
Taurine (%)	0.07	Methionine (%)	0.25
Arginine (%)	0.6	Methionine + cystine (%)	0.45
Lysine (%)	0.6		

MINERALS			
Calcium (%)	0.22	Copper (mg/kg)	4
Phosphorus (%)	0.2	Iron (mg/kg)	30
Sodium (%)	0.17	Manganese (mg/kg)	2.5
Chloride (%)	0.14	Zinc (mg/kg)	25
Potassium (%)	0.16	Selenium (mg/kg)	0.3
Magnesium (%)	0.012	Iodine (mg/kg)	0.4

VITAMINS			
Vit. A (IU/kg)	45000	Vit. B6 (Pyridoxine) (mg/kg)	0.88
Vit. D3 (IU/kg)	170	Vit. B12 (Cyanocobalamin) (mg/kg)	0.01
Vit. E (mg/kg)	15	Vit. B3 (Niacine) (mg/kg)	15
Vit. C (mg/kg)	-	Biotin (mg/kg)	0.04
Vit. B1 (Thiamin) (mg/kg)	2	Folic acid (mg/kg)	0.3
Vit. B2 (Riboflavin) (mg/kg)	2	Choline (mg/kg)	720
Vit. B5 (Pantothenic-acid) (mg/kg)	5		

OTHER GUARANTEES			
Starch (%)	-	Omega-3 (%)	0.04
Dietary fiber (%)	1.1	EPA + DHA (%)	0.01
Linoleic acid (%)	0.2	L-Carnitine (mg/kg)	-
Arachidonic acid (%)	0.05	Lutein (mg/kg)	-
Omega-6 (%)	0.4	Glucosamine + Chondroitine (mg/kg)	-

CALCULATED METABOLISABLE ENERGY			
Energy [NRC 85] (kcal/kg)	774	Energy NRC 2006 TDF (kcal/kg)	924



INSTINCTIVELY PREFERRED

Formulated to match the optimal Macro Nutritional Profile instinctively preferred by adult cats.



HEALTH URINARY SYSTEM

Helps support a healthy urinary system.



MAINTAINS IDEAL WEIGHT

Formulated to help maintain ideal weight.

FEEDING GUIDELINES

24H Feeding instructions

Weight (kg)	Pouches only	OR	1 pouch + Kibbles*
3 kg	2 + 1/4		24 g
4 kg	2 + 3/4		35 g
5 kg	3		44 g
6 kg	3 + 1/2		53 g

Water

* ROYAL CANIN® "Indoor 27"



INSTINCTIVE

Adult cats



INGREDIENTS

COMPOSITION

Meat and animal derivatives, vegetable protein extracts, derivatives of vegetable origin, oils and fats, minerals, various sugars.

ADDITIVES (PER KG)

Nutritional additives: Vitamin D3: 100 IU, E1 (Iron): 4 mg, E2 (Iodine): 0.3 mg, E4 (Copper): 2.5 mg, E5 (Manganese): 1.2 mg, E6 (Zinc): 12 mg.

ANALYTICAL CONSTITUENTS

Protein	11.8%
Fat content	4.5%
Crude fibres	0.8%
Crude ash	1.5%

AMINO ACIDS			
Taurine (%)	0.08	Methionine (%)	0.2
Arginine (%)	0.7	Methionine + cystine (%)	0.35
Lysine (%)	0.65		

MINERALS			
Calcium (%)	0.2	Copper (mg/kg)	4
Phosphorus (%)	0.19	Iron (mg/kg)	25
Sodium (%)	0.15	Manganese (mg/kg)	2
Chloride (%)	0.16	Zinc (mg/kg)	23
Potassium (%)	0.17	Selenium (mg/kg)	0.2
Magnesium (%)	0.015	Iodine (mg/kg)	0.4

VITAMINS			
Vit. A (IU/kg)	20000	Vit. B6 (Pyridoxine) (mg/kg)	1
Vit. D3 (IU/kg)	125	Vit. B12 (Cyanocobalamin) (mg/kg)	0.01
Vit. E (mg/kg)	30	Vit. B3 (Niacine) (mg/kg)	15
Vit. C (mg/kg)	-	Biotin (mg/kg)	0.03
Vit. B1 (Thiamin) (mg/kg)	2	Folic acid (mg/kg)	0.4
Vit. B2 (Riboflavin) (mg/kg)	2	Choline (mg/kg)	770
Vit. B5 (Pantothenic-acid) (mg/kg)	5		

OTHER GUARANTEES			
Starch (%)	-	Omega-3 (%)	0.06
Dietary fiber (%)	1.1	EPA + DHA (%)	0.005
Linoleic acid (%)	1	L-Carnitine (mg/kg)	-
Arachidonic acid (%)	0.02	Lutein (mg/kg)	-
Omega-6 (%)	1.3	Glucosamine + Chondroitine (mg/kg)	-

CALCULATED METABOLISABLE ENERGY			
Energy [NRC 85] (kcal/kg)	845	Energy NRC 2006 TDF (kcal/kg)	985



INSTINCTIVELY PREFERRED

Formulated to match the optimal Macro Nutritional Profile instinctively preferred by adult cats.



HEALTH URINARY SYSTEM

Helps support a healthy urinary system.



MAINTAINS IDEAL WEIGHT

Formulated to help maintain ideal weight.

FEEDING GUIDELINES

24H Feeding instructions

Weight	Pouches only	OR	1 pouch + Kibbles *
3 kg	2		23 g
4 kg	2 + 1/2		33 g
5 kg	3		43 g
6 kg	3 + 1/4		52 g

Water

* ROYAL CANIN® "Indoor 27"



INSTINCTIVE

7+
years

Cats over 7 years old



INGREDIENTS

COMPOSITION

Meat and animal derivatives, cereals, vegetable protein extracts, derivatives of vegetable origin, minerals, various sugars, molluscs and crustaceans.

ADDITIVES (PER KG)

Nutritional additives: Vitamin D3: 320 IU, E1 (Iron): 3 mg, E2 (Iodine): 0.3 mg, E4 (Copper): 2.3 mg, E5 (Manganese): 0.8 mg, E6 (Zinc): 8 mg.

ANALYTICAL CONSTITUENTS

Protein	10.5%
Fat content	2.5%
Crude fibres	1.4%
Crude ash	1.1%

AMINO ACIDS			
Taurine (%)	0.1	Methionine (%)	0.2
Arginine (%)	0.6	Methionine + cystine (%)	0.3
Lysine (%)	0.55		
MINERALS			
Calcium (%)	0.17	Copper (mg/kg)	3
Phosphorus (%)	0.15	Iron (mg/kg)	30
Sodium (%)	0.11	Manganese (mg/kg)	1.7
Chloride (%)	0.15	Zinc (mg/kg)	20
Potassium (%)	0.15	Selenium (mg/kg)	0.2
Magnesium (%)	0.011	Iodine (mg/kg)	0.35

VITAMINS			
Vit. A (IU/kg)	45000	Vit. B6 (Pyridoxine) (mg/kg)	2
Vit. D3 (IU/kg)	330	Vit. B12 (Cyanocobalamin) (mg/kg)	0.01
Vit. E (mg/kg)	110	Vit. B3 (Niacine) (mg/kg)	20
Vit. C (mg/kg)	43	Biotin (mg/kg)	0.05
Vit. B1 (Thiamin) (mg/kg)	2	Folic acid (mg/kg)	0.4
Vit. B2 (Riboflavin) (mg/kg)	2	Choline (mg/kg)	670
Vit. B5 (Pantothenic-acid) (mg/kg)	3		

OTHER GUARANTEES			
Starch (%)	-	Omega-3 (%)	0.03
Dietary fiber (%)	1.5	EPA + DHA (%)	0.004
Linoleic acid (%)	0.3	L-Carnitine (mg/kg)	-
Arachidonic acid (%)	0.03	Lutein (mg/kg)	1
Omega-6 (%)	0.45	Glucosamine + Chondroitine (mg/kg)	128

CALCULATED METABOLISABLE ENERGY			
Energy [NRC 85] (kcal/kg)	720	Energy NRC 2006 TDF (kcal/kg)	855



VITALITY COMPLEX

Helps support vitality due to an exclusive antioxidant complex.



INSTINCTIVELY PREFERRED

Formulated to match the optimal Macro Nutritional Profile instinctively preferred by adult cats.



RENAL HEALTH

Adapted phosphorus content.

FEEDING GUIDELINES

24H Feeding instructions

Weight (kg)	Pouches only	OR	1 pouch + Kibbles*
3 kg	2 + 1/4		26 g
4 kg	3		36 g
5 kg	3 + 1/4		45 g
6 kg	3 + 3/4		54 g

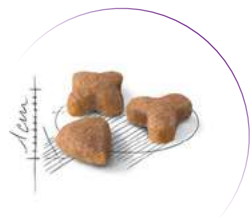
Water

* ROYAL CANIN® "Indoor 7+"



Regular
SENSIBLE 33

Sensitive adult cats



[Available in 400g - 2kg - 4kg - 10kg - 15kg]



OPTIMAL DIGESTION

Some cats have digestive sensitivity leading to soft stools. **SENSIBLE 33** contains an exclusive combination of nutrients to support optimal digestive security (L.I.P.*) and prebiotics for a balanced intestinal flora.

*L.I.P.: protein selected for its very high digestibility



HIGH PALATABILITY

Three different kibble shapes and carefully selected flavourings to stimulate food intake in sensitive cats.



CONCENTRATED ENERGY

For cats requiring a higher energy density.



URINARY HEALTH

Formulated to help maintain health of an adult cat's urinary system.

INGREDIENTS

COMPOSITION

Dehydrated poultry protein, rice, animal fats, maize, vegetable protein isolate*, dehydrated pork protein, wheat flour, wheat, hydrolysed animal proteins, maize gluten, yeasts and parts thereof, beet pulp, minerals, fish oil, vegetable fibres, soya oil, fructo-oligo-saccharides.

ADDITIVES (PER KG)

Nutritional additives: Vitamin A: 18500 IU, Vitamin D3: 1000 IU, E1 (Iron): 38 mg, E2 (Iodine): 3.8 mg, E4 (Copper): 12 mg, E5 (Manganese): 50 mg, E6 (Zinc): 150 mg, E8 (Selenium): 0.1 mg - Technological additives: Clinoptilolite of sedimentary origin: 5 g - Zootechnical additives: Ammonium chloride: 5 g - Preservatives - Antioxidants.

*L.I.P. : protein selected for its very high assimilation.

FEEDING GUIDELINES

- 24H - Recommended daily quantities

Cat's weight	3 kg	4 kg	5 kg	6 kg
IDEAL WEIGHT	39g 23g +1	48g 32g +1	57g 40g +1	64g 48g +1
OVERWEIGHT	31g 15g +1	39g 22g +1	45g 29g +1	51g 35g +1

Kibbles only: Croquettes seules / Ausschließlich Trockenration / Solo crocchette
 OR
 Kibbles + 1 pouch "Royal Canin Instinctive" / Croquettes + 1 sachet "Royal Canin Instinctive" / Trockenration + 1 Frischbeute "Royal Canin Instinctive" / Crocchette + 1 bustina "Royal Canin Instinctive"

*Taking into account cats' weight

ANALYTICAL CONSTITUENTS

Protein	33%
Fat content	22%
Crude fibres	1.6%
Crude ash	7.4%
NFE	30.5%

AMINO ACIDS			
Taurine (%)	0.19	Methionine (%)	0.66
Arginine (%)	1.83	Methionine + cystine (%)	1.06
Lysine (%)	1.15		

MINERALS			
Calcium (%)	1.1	Copper (mg/kg)	15
Phosphorus (%)	1	Iron (mg/kg)	159
Sodium (%)	0.5	Manganese (mg/kg)	65
Chloride (%)	0.97	Zinc (mg/kg)	189
Potassium (%)	0.75	Selenium (mg/kg)	0.34
Magnesium (%)	0.07	Iodine (mg/kg)	4.3
Sulphur (%)	0.6		

VITAMINS			
Vit. A (IU/kg)	20000	Vit. B6 (Pyridoxin) (mg/kg)	27.9
Vit. D3 (IU/kg)	1000	Vit. B12 (Cyanocobalamin) (mg/kg)	0.17
Vit. E (mg/kg)	610	Vit. B3 (Niacine) (mg/kg)	188.7
Vit. C (mg/kg)	300	Biotin (mg/kg)	1.79
Vit. B1 (Thiamin) (mg/kg)	16.9	Folic-acid (mg/kg)	4.5
Vit. B2 (Riboflavin) (mg/kg)	60.9	Choline (mg/kg)	3400
Vit. B5 (Pantothenic Acid) (mg/kg)	56.7		

OTHER GUARANTEES			
Starch (%)	25.8	Omega-3 (%)	0.88
Dietary fiber (%)	6.3	Omega-6 (%)	4.4
Linoleic-acid (%)	4.13	EPA + DHA (%)	0.3
Arachidonic-acid (%)	0.09	Lutein	-

CALCULATED METABOLISABLE ENERGY			
Energy (NRC 85) (kcal/kg)	4093	Energy (NRC 2006) (kcal/kg)	4295



Feline Preference
SAVOUR
Exigent

Fussy cats - Savour discerning



[Available in 400g - 2kg - 4kg - 10kg]

INGREDIENTS

COMPOSITION

Maize, dehydrated poultry protein, rice, vegetable protein isolate*, animal fats, maize gluten, hydrolysed animal proteins, vegetable fibres, yeasts and parts thereof, minerals, beet pulp, soya oil, fructo-oligo-saccharides, borage oil.

ADDITIVES (PER KG)

Vitamin A: 14500 IU, Vitamin D3: 800 IU, E1 (Iron): 37 mg, E2 (Iodine): 3.7 mg, E4 (Copper): 11 mg, E5 (Manganese): 48 mg, E6 (Zinc): 143 mg, E8 (Selenium): 0.08 mg - Technological additives: Clinoptilolite of sedimentary origin: 5 g - Zootechnical additives: Ammonium chloride: 5 g - Preservatives - Antioxidants.

*L.I.P. : protein selected for its very high assimilation.

ANALYTICAL CONSTITUENTS

Protein	33%
Fat content	16%
Crude fibres	3.1%
Crude ash	7.2%
NFE	35.2%

AMINO ACIDS			
Taurine (%)	0.2	Methionine (%)	0.66
Arginine (%)	1.85	Methionine + cystine (%)	1.1
Lysine (%)	1.32		

MINERALS			
Calcium (%)	1.04	Copper (mg/kg)	15
Phosphorus (%)	0.9	Iron (mg/kg)	153
Sodium (%)	0.45	Manganese (mg/kg)	60
Chloride (%)	0.94	Zinc (mg/kg)	180
Potassium (%)	0.7	Selenium (mg/kg)	0.29
Magnesium (%)	0.08	Iodine (mg/kg)	4.1
Sulphur (%)	0.6		

VITAMINS			
Vit. A (IU/kg)	16500	Vit. B6 (Pyridoxine) (mg/kg)	22.3
Vit. D3 (IU/kg)	800	Vit. B12 (Cyanocobalamin) (mg/kg)	0.14
Vit. E (mg/kg)	600	Vit. B3 (Niacine) (mg/kg)	150.5
Vit. C (mg/kg)	300	Biotin (mg/kg)	1.43
Vit. B1 (Thiamin) (mg/kg)	13.5	Folic-acid (mg/kg)	3.6
Vit. B2 (Riboflavin) (mg/kg)	48.6	Choline (mg/kg)	3100
Vit. B5 (Pantothenic-acid) (mg/kg)	45.2		

OTHER GUARANTEES			
Starch (%)	29.4	Omega-6 (%)	3.57
Dietary fiber (%)	8.9	Omega-3 (%)	0.33
Linoleic-acid (%)	3.43	EPA + DHA (%)	0.01
Arachidonic-acid (%)	0.07	Lutein (mg/kg)	-

CALCULATED METABOLISABLE ENERGY			
Energy (NRC 85) (kcal/kg)	3747	Energy (NRC 2006) (kcal/kg)	3959

FEEDING GUIDELINES

- 24H - Recommended daily quantities					
Cat's weight	3 kg	4 kg	5 kg	6 kg	
UNDER WEIGHT	51g	63g	74g		
IDEAL WEIGHT	43g	53g	62g	70g	
OVER WEIGHT		42g	49g	56g	

*Taking into account cats' weight

DUAL SAVOUR SENSATION

Some fussy cats are most attracted by diversity in the bowl. **SAVOUR EXIGENT** contains 2 synergistic kibbles, each of a different formula and texture, to stimulate the natural preference of these cats.

OPTIMAL WEIGHT

Adapted energy content to help maintain the fussy cat at ideal weight.

INDIVIDUAL PREFERENCE

Each cat has a natural preference when selecting food: aromatic profile, savour diversity or by protein level. Royal Canin has developed 3 different formulas to satisfy even the fussiest cats.

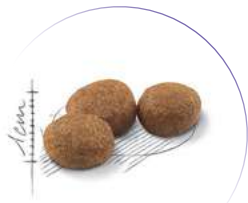
URINARY HEALTH

Formulated to help maintain health of an adult cat's urinary system.



Regular
STERILISED 37

Neutered adult cats



[Available in 400g - 2kg - 4kg - 10kg - 15kg]



WEIGHT MANAGEMENT

After neutering, energy requirements of cats decrease. **STERILISED 37** helps limit the risk of excess weight gain thanks to a moderate level of fat and adequate daily rations.



URINARY HEALTH

Helps support a healthy urinary system by providing an adequate mineral balance.



HIGH PROTEIN CONTENT

Helps maintain muscle mass thanks to a high protein content.



ENRICHED WITH L-CARNITINE

L-Carnitine is involved in healthy fat metabolism.

INGREDIENTS

COMPOSITION

Dehydrated poultry protein, maize, vegetable protein isolate*, vegetable fibres, animal fats, hydrolysed animal proteins, rice, wheat, beet pulp, maize gluten, yeasts and parts thereof, minerals, fish oil, fructo-oligo-saccharides, soya oil.

ADDITIVES (PER KG)

Nutritional additives: Vitamin A: 19000 IU, Vitamin D3: 1000 IU, E1 (Iron): 31 mg, E2 (Iodine): 3.1 mg, E4 (Copper): 10 mg, E5 (Manganese): 41 mg, E6 (Zinc): 122 mg, E8 (Selenium): 0.05 mg - L-carnitine: 100 mg - Technological additives: Clinoptilolite of sedimentary origin: 10 g - Zootechnical additives: Ammonium chloride: 5 g - Preservatives - Antioxidants.

*L.I.P. : protein selected for its very high assimilation.

FEEDING GUIDELINES

- 24H - Recommended daily quantities

Cat's weight	3 kg	4 kg	5 kg	6 kg
IDEAL WEIGHT	47g 30g +1	57g 41g +1	67g 51g +1	76g 60g +1
OVERWEIGHT	37g 21g +1	46g 29g +1	54g 37g +1	61g 44g +1

Kibbles only / Croquettes seules / Ausschließlich Trockenmahlung / Droogvoeding
 OR
 Kibbles + 1 pouch "Royal Canin Sterilised" / Croquettes + 1 sachet "Royal Canin Sterilised" / Trockenmahlung + 1 Frischbehälter "Royal Canin Sterilised" / Droogvoeding + 1 portiefwepakking "Royal Canin Sterilised"

Water / Eau / Wasser

*Taking into account cats' weight

ANALYTICAL CONSTITUENTS

Protein	37%
Fat content	12%
Crude fibres	6.2%
Crude ash	8.2%
NFE	31.1%

AMINO ACIDS			
Taurine (%)	0.2	Methionine (%)	0.89
Arginine (%)	1.93	Methionine + cystine (%)	1.41
Lysine (%)	1.35		

MINERALS			
Calcium (%)	1.1	Copper (mg/kg)	15
Phosphorus (%)	1	Iron (mg/kg)	195
Sodium (%)	0.6	Manganese (mg/kg)	57
Chloride (%)	1.33	Zinc (mg/kg)	167
Potassium (%)	0.8	Selenium (mg/kg)	0.33
Magnesium (%)	0.09	Iodine (mg/kg)	3.7
Sulphur (%)	0.6		

VITAMINS			
Vit. A (IU/kg)	21500	Vit. B6 (Pyridoxin) (mg/kg)	28.8
Vit. D3 (IU/kg)	1000	Vit. B12 (Cyanocobalamin) (mg/kg)	0.18
Vit. E (mg/kg)	500	Vit. B3 (Niacine) (mg/kg)	194.7
Vit. C (mg/kg)	200	Biotin (mg/kg)	1.84
Vit. B1 (Thiamin) (mg/kg)	17.5	Folic-acid (mg/kg)	4.7
Vit. B2 (Riboflavin) (mg/kg)	62.9	Choline (mg/kg)	3500
Vit. B5 (Panthotenic-acid)	58.5		

OTHER GUARANTEES			
Starch (%)	22.8	Omega-3 (%)	0.59
Dietary fiber (%)	14.5	Omega-6 (%)	2.74
Linoleic-acid (%)	2.62	EPA + DHA (%)	0.23
Arachidonic-acid (%)	0.08	L-Carnitine (mg/kg)	100

CALCULATED METABOLISABLE ENERGY			
Energy (NRC 85) (kcal/kg)	3404	Energy (NRC 2006) (kcal/kg)	3629



STERILISED

Neutered adult cats



INGREDIENTS

COMPOSITION

Meat and animal derivatives, cereals, derivatives of vegetable origin, minerals, vegetable protein extracts, various sugars.

ADDITIVES (PER KG)

Nutritional additives: Vitamin D3: 90 IU, E1 (Iron): 3 mg, E2 (Iodine): 0.21 mg, E4 (Copper): 1.6 mg, E5 (Manganese): 0.9 mg, E6 (Zinc): 9 mg - Technological additives: Clinoptilolite of sedimentary origin: 0.2 g

ANALYTICAL CONSTITUENTS

Protein	9%
Fat content	2.6%
Crude fibres	1.8%
Crude ash	1.3%

AMINO ACIDS			
Taurine (%)	0.065	Methionine (%)	0.15
Arginine (%)	0.55	Methionine + cystine (%)	0.25
Lysine (%)	0.5		

MINERALS			
Calcium (%)	0.2	Copper (mg/kg)	2
Phosphorus (%)	0.22	Iron (mg/kg)	25
Sodium (%)	0.16	Manganese (mg/kg)	2
Chloride (%)	0.2	Zinc (mg/kg)	19
Potassium (%)	0.14	Selenium (mg/kg)	0.2
Magnesium (%)	0.013	Iodine (mg/kg)	0.32

VITAMINS			
Vit. A (IU/kg)	15000	Vit. B6 (Pyridoxine) (mg/kg)	1
Vit. D3 (IU/kg)	100	Vit. B12 (Cyanocobalamin) (mg/kg)	0.01
Vit. E (mg/kg)	30	Vit. B3 (Niacine) (mg/kg)	15
Vit. C (mg/kg)	-	Biotin (mg/kg)	0.02
Vit. B1 (Thiamin) (mg/kg)	2	Folic acid (mg/kg)	0.25
Vit. B2 (Riboflavin) (mg/kg)	1	Choline (mg/kg)	630
Vit. B5 (Pantothenic-acid) (mg/kg)	3		

OTHER GUARANTEES			
Starch (%)	-	Omega-3 (%)	0.04
Dietary fiber (%)	2	EPA + DHA (%)	0.005
Linoleic acid (%)	0.4	L-Carnitine (mg/kg)	20
Arachidonic acid (%)	0.03	Lutein (mg/kg)	-
Omega-6 (%)	0.5	Glucosamine + Chondroitine (mg/kg)	-

CALCULATED METABOLISABLE ENERGY			
Energy [NRC 85] (kcal/kg)	687	Energy NRC 2006 TDF (kcal/kg)	799



WEIGHT MAINTENANCE

Helps maintain ideal weight of sterilised cats.



HEALTHY URINARY SYSTEM

Helps support a healthy urinary system.



INSTINCTIVELY PREFERRED

Formulated to match the optimal Macro Nutritional Profile instinctively preferred by adult cats.

FEEDING GUIDELINES

24H Feeding instructions

Weight (kg)	Pouches only	OR	1 pouch + Kibbles*
3 kg	2 + 1/2		28 g
4 kg	3		39 g
5 kg	3 + 1/2		48 g
6 kg	4		58 g

Water

* ROYAL CANIN® "Sterilised"



Home Life
INDOOR 27

Indoor adult cats



[Available in 400g - 2kg - 4kg - 10kg]



STOOL ODOUR REDUCTION

A lack of exercise may lead to a slower intestinal transit and smelly stools. **INDOOR 27**® contains highly digestible protein (L.I.P.*) and helps reduce the quantity and odour of stools.

*L.I.P.: protein selected for its very high digestibility



MODERATE CALORIE

A moderate fat content adapted to the lower activity of indoor cats.



HAIRBALL REDUCTION

Helps stimulate the elimination of ingested hair thanks to specific fibres including psyllium.



URINARY HEALTH

Formulated to help maintain health of an adult cat's urinary system.

INGREDIENTS

COMPOSITION

Dehydrated poultry protein, rice, wheat, maize, vegetable protein isolate*, animal fats, hydrolysed animal proteins, wheat flour, vegetable fibres, beet pulp, yeasts and parts thereof, soya oil, minerals, fructo-oligo-saccharides, fish oil, psyllium husks and seeds (0.5%).

ADDITIVES (PER KG)

Nutritional additives: Vitamin A: 13500 IU, Vitamin D3: 700 IU, E1 (Iron): 42 mg, E2 (Iodine): 4.2 mg, E4 (Copper): 13 mg, E5 (Manganese): 55 mg, E6 (Zinc): 164 mg, E8 (Selenium): 0.09 mg - Technological additives: Clinoptilolite of sedimentary origin: 10 g - Preservatives - Antioxidants.

*L.I.P. : protein selected for its very high assimilation.

FEEDING GUIDELINES

- 24H - Recommended daily quantities

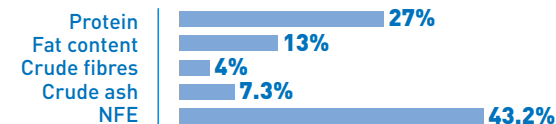
Cat's weight	3 kg	4 kg	5 kg	6 kg
REAL WEIGHT	45g 26g +1	56g 36g +1	65g 46g +1	74g 55g +1
OVERWEIGHT	36g 17g +1	44g 25g +1	52g 32g +1	59g 40g +1

Kibbles only / Croquettes seules / Ausschließlich Trockenmahlung / Droogvoeding
 +1 sachet "Royal Canin Instinctive" / +1 Frischbeute "Royal Canin Instinctive" / Droogvoeding + 1 portiefwepakking "Royal Canin Instinctive"

Water / Eau / Wasser

*Taking into account cats' weight

ANALYTICAL CONSTITUENTS



AMINO ACIDS			
Taurine (%)	0.17	Methionine (%)	0.65
Arginine (%)	1.45	Methionine + cystine (%)	1.05
Lysine (%)	0.94		

MINERALS			
Calcium (%)	1.1	Copper (mg/kg)	15
Phosphorus (%)	0.84	Iron (mg/kg)	190
Sodium (%)	0.5	Manganese (mg/kg)	73
Chloride (%)	0.74	Zinc (mg/kg)	202
Potassium (%)	0.65	Selenium (mg/kg)	0.28
Magnesium (%)	0.08	Iodine (mg/kg)	4.5
Sulphur (%)	0.6		

VITAMINS			
Vit. A (IU/kg)	16500	Vit. B6 (Pyridoxine) (mg/kg)	20.8
Vit. D3 (IU/kg)	700	Vit. B12 (Cyanocobalamin) (mg/kg)	0.13
Vit. E (mg/kg)	500	Vit. B3 (Niacine) (mg/kg)	140.5
Vit. C (mg/kg)	200	Biotin (mg/kg)	1.33
Vit. B1 (Thiamin) (mg/kg)	12.6	Folic-acid (mg/kg)	3.4
Vit. B2 (Riboflavin) (mg/kg)	45.4	Choline (mg/kg)	2900
Vit. B5 (Pantothenic-acid)	42.2		

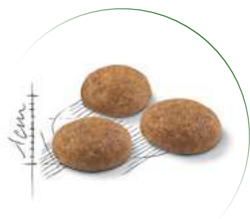
OTHER GUARANTEES			
Starch (%)	35.7	Omega-3 (%)	0.63
Dietary fiber (%)	11.5	Omega-6 (%)	3.33
Linoleic-acid (%)	3.13	EPA + DHA (%)	0.21
Arachidonic-acid (%)	0.07	L-Carnitine (mg/kg)	50

CALCULATED METABOLISABLE ENERGY			
Energy (INRC 85) (kcal/kg)	3562	Energy (NRC 2006) (kcal/kg)	3745



Active Life OUTDOOR

Active outdoor cats



[Available in 400g - 2kg - 4kg - 10kg]



ACTIVITY SUPPORT

Cats with access to the outdoors may need higher calorie nutrition. **OUTDOOR** meets the energy requirements of active cats.



SKIN BARRIER

Contains a specific combination of nutrients to support skin barrier associated with a complex of antioxidants.



JOINT HEALTH

Contains a combination of joint supporting nutrients and EPA and DHA.



URINARY HEALTH

Formulated to help maintain health of an adult cat's urinary system.

INGREDIENTS

COMPOSITION

Dehydrated poultry protein, rice, maize, animal fats, wheat, hydrolysed animal proteins, vegetable protein isolate*, maize gluten, yeasts and parts thereof, beet pulp, fish oil, minerals, copra oil, soya oil, fructo-oligo-saccharides, hydrolysed yeast (source of manno-oligo-saccharides), borage oil, marigold extract (source of lutein), hydrolysed crustaceans (source of glucosamine), hydrolysed cartilage (source of chondroitin).

ADDITIVES (PER KG)

Vitamin A: 32000 IU, Vitamin D3: 900 IU, Vitamin C: 230 IU, E1 (Iron): 38 mg, E2 (Iodine): 3,8 mg, E4 (Copper): 12 mg, E5 (Manganese): 50 mg, E6 (Zinc): 149 mg, E8 (Selenium): 0,07 mg
Sensory additives: tea extract (source of polyphenols): 0,6 g - Preservatives - Antioxidants.

*L.I.P. : protein selected for its very high assimilation.

FEEDING GUIDELINES

- 24H - Recommended daily quantities						
Cat's weight	3 kg	4 kg	5 kg	6 kg		
IDEAL WEIGHT	40g 23g +1	49g 32g +1	58g 41g +1	66g 49g +1		
OVERWEIGHT	32g 15g +1	39g 22g +1	46g 29g +1	53g 35g +1		
	Kibbles only Croquettes seules Ausschließlich Trockenmahlung Droggiasole		OR OU ODER OFT		Kibbles + 1 pouch "Royal Canin Instinctive" Croquettes + 1 sachet "Royal Canin Instinctive" Trockenmahlung + 1 Frischfleisch "Royal Canin Instinctive" Droggiasole + 1 Portionverpackung "Royal Canin Instinctive"	
	Water Eau Wasser					

*Taking into account cats' weight

ANALYTICAL CONSTITUENTS

Protein	30%
Fat content	20%
Crude fibres	1.3%
Crude ash	7.2%
NFE	36%

AMINO ACIDS			
Taurine (%)	0.22	Methionine (%)	0.79
Arginine (%)	1.73	Methionine + cystine (%)	1.2
Lysine (%)	1.24		

MINERALS			
Calcium (%)	1.11	Copper (mg/kg)	15
Phosphorus (%)	1.05	Iron (mg/kg)	127
Sodium (%)	0.6	Manganese (mg/kg)	61
Chloride (%)	0.88	Zinc (mg/kg)	185
Potassium (%)	0.8	Selenium (mg/kg)	0.31
Magnesium (%)	0.08	Iodine (mg/kg)	4.3
Sulphur (%)	0.5		

VITAMINS			
Vit. A (IU/kg)	32000	Vit. B12 (Cyanocobalamin) (mg/kg)	0.14
Vit. D3 (IU/kg)	800	Vit. B5 (Pantothenic-acid) (mg/kg)	151.1
Vit. E (mg/kg)	610	Vit. B3 (Niacine) (mg/kg)	502.6
Vit. C (mg/kg)	300	Biotin (mg/kg)	3.2
Vit. B1 (Thiamin) (mg/kg)	28.1	Folic-acid (mg/kg)	14.2
Vit. B2 (Riboflavin) (mg/kg)	50.6	Choline (mg/kg)	3300
Vit. B6 (Pyridoxine) (mg/kg)	78.8	Inositol (mg/kg)	1100

OTHER GUARANTEES			
Starch (%)	30.7	Omega-3 (%)	1.03
Dietary fiber (%)	6.6	EPA + DHA (%)	0.4
Linoleic-acid (%)	4.26	Chondroitin sulphate + Glucosamine (mg/kg)	500
Arachidonic-acid (%)	0.11	Lutein (mg/kg)	5
Omega-6 (%)	4.47		

CALCULATED METABOLISABLE ENERGY			
Energy (NRC 85) (kcal/kg)	4010	Energy (NRC 2006) (kcal/kg)	4207

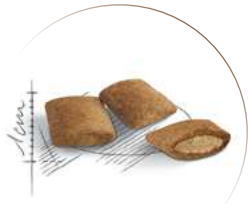


Senior AGEING 12+ years

Senior cats over 12 years old



[Available in 400g - 2kg - 4kg]



EXCLUSIVE KIBBLE



APPETITE STIMULATION

In some senior cats, the senses of taste and smell decline with age which leads to lower food intake. **AGEING 12+** helps stimulate the senior cat's appetite with a highly palatable, double texture kibble which is easy to chew.



HEALTHY AGEING COMPLEX

A patented complex of antioxidants including lycopene and Omega-3 fatty acids to support the body systems through the ageing process.

* France, patent N° EP1146870



RENAL HEALTH

Helps support renal healthy function thanks to a moderate phosphorus level.



URINARY HEALTH

Formulated to help maintain health of an adult cat's urinary system.

INGREDIENTS

COMPOSITION

Vegetable protein isolate*, precooked wheat flour, animal fats, dehydrated poultry protein, rice, maize, vegetable fibres, hydrolysed animal proteins, chicory pulp, minerals, fish oil, soya oil, yeasts and parts thereof, tomato (source of lycopene), fructo-oligo-saccharides, psyllium husks and seeds, hydrolysed yeast (source of manno-oligo-saccharides), hydrolysed crustaceans (source of glucosamine), borage oil, marigold extract (source of lutein), hydrolysed cartilage (source of chondroitin).

ADDITIVES (PER KG)

Vitamin A: 19000 IU, Vitamin D3: 700 IU, E1 (Iron): 37 mg, E2 (Iodine): 3.7 mg, E4 (Copper): 11 mg, E5 (Manganese): 48 mg, E6 (Zinc): 145 mg, E8 (Selenium): 0.06 mg - Sensory additives: Tea extract (source of polyphenols): 0.6 g - Preservatives - Antioxidants.

*L.I.P. : protein selected for its very high assimilation.

FEEDING GUIDELINES

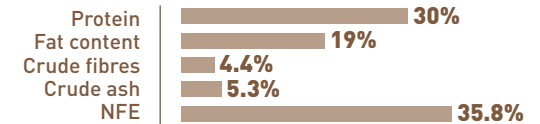
- 24H - Recommended daily quantities

Cat's weight	3 kg	4 kg	5 kg	6 kg
IDEAL WEIGHT	42g 23g + 19g	51g 33g + 18g	60g 41g + 19g	68g 50g + 18g
OVERWEIGHT	33g 15g + 18g	41g 22g + 19g	48g 29g + 19g	54g 36g + 18g

Kibbles only / Croquettes seules / Ausschließlich Trockenration / Droogvoeding
 OU / OÜ / OÜE
 Kibbles + 1 pouch "Royal Canin Ageing 12+" / Croquettes + 1 sachet "Royal Canin Ageing 12+" / Trockenration + 1 Frischbeutel "Royal Canin Ageing 12+" / Droogvoeding + 1 portievruijsje "Royal Canin Ageing 12+"

*Taking into account cats' weight

ANALYTICAL CONSTITUENTS



AMINO ACIDS			
Taurine (%)	0.5	Methionine (%)	0.83
Arginine (%)	1.32	Methionine + cystine (%)	1.29
Lysine (%)	1.04		

MINERALS			
Calcium (%)	0.75	Copper (mg/kg)	15
Phosphorus (%)	0.6	Iron (mg/kg)	98
Sodium (%)	0.3	Manganese (mg/kg)	67
Chloride (%)	0.56	Zinc (mg/kg)	178
Potassium (%)	0.7	Selenium (mg/kg)	0.23
Magnesium (%)	0.06	Iodine (mg/kg)	4
Sulphur (%)	0.8		

VITAMINS			
Vit. A (IU/kg)	21500	Vit. B6 (Pyridoxin) (mg/kg)	37.9
Vit. D3 (IU/kg)	700	Vit. B12 (Cyanocobalamin) (mg/kg)	0.12
Vit. E (mg/kg)	530	Betacarotene (mg/kg)	14
Vit. C (mg/kg)	410	Vit. B3 (Niacine) (mg/kg)	134.5
Vit. B1 (Thiamin) (mg/kg)	12.1	Biotin (mg/kg)	2.92
Vit. B2 (Riboflavin) (mg/kg)	43.4	Folic-acid (mg/kg)	11.2
Vit. B5 (Pantothenic-acid)(mg/kg)	49.3	Choline (mg/kg)	3200

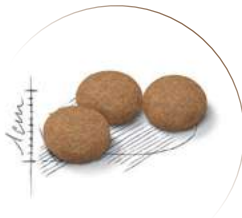
OTHER GUARANTEES			
Starch (%)	29.3	EPA + DHA (%)	0.58
Dietary fiber (%)	10.9	Lutein (mg/kg)	5
Linoleic-acid (%)	3.46	Green tea polyphenols (mg/kg)	150
Arachidonic-acid (%)	0.08	Lycopene (mg/kg)	8
Omega-3 (%)	1.09	Chondroitin sulphate + Glucosamine (mg/kg)	1000
Omega-6 (%)	3.66	L-Carnitine (mg/kg)	50

CALCULATED METABOLISABLE ENERGY			
Energy (NRC 85) (kcal/kg)	3918	Energy (NRC 2006) (kcal/kg)	4080



Senior AGEING 12+ years Sterilised

Neutered cats over 12 years old



[Available in 400g - 2kg - 4kg]

INGREDIENTS

COMPOSITION

Maize, vegetable protein isolate*, maize flour, dehydrated poultry protein, wheat, maize gluten, animal fats, vegetable fibres, hydrolysed animal proteins, chicory pulp, minerals, fish oil, soy oil, yeasts and parts thereof, tomato (source of lycopene), fructo-oligo-saccharides, psyllium husks and seeds, hydrolysed yeast (source of manno-oligo-saccharides), hydrolysed crustaceans (source of glucosamine), borage oil, marigold extract (source of lutein), hydrolysed cartilage (source of chondroitin).

ADDITIVES (PER KG)

Vitamin A: 19000 IU, Vitamin D3: 700 IU, E1 (Iron): 40 mg, E2 (Iodine): 4 mg, E4 (Copper): 12 mg, E5 (Manganese): 52 mg, E6 (Zinc): 154 mg, E8 (Selenium): 0.07 mg - Sensory additives: Tea extract (source of polyphenols): 0.6 g - Preservatives - Antioxidants.

*L.I.P. : protein selected for its very high assimilation.

ANALYTICAL CONSTITUENTS

Protein	30%
Fat content	15%
Crude fibres	4.9%
Crude ash	5.4%
NFE	39.2%

AMINO ACIDS			
Taurine (%)	0.47	Methionine (%)	0.85
Arginine (%)	1.21	Methionine + cystine (%)	1.3
Lysine (%)	0.99		

MINERALS			
Calcium (%)	0.75	Copper (mg/kg)	15
Phosphorus (%)	0.6	Iron (mg/kg)	104
Sodium (%)	0.3	Manganese (mg/kg)	65
Chloride (%)	0.56	Zinc (mg/kg)	184
Potassium (%)	0.7	Selenium (mg/kg)	0.21
Magnesium (%)	0.07	Iodine (mg/kg)	4.2
Sulphur (%)	0.8		

VITAMINS			
Vit. A (IU/kg)	21500	Vit. B6 (Pyridoxin) (mg/kg)	38.2
Vit. D3 (IU/kg)	700	Vit. B12 (Cyanocobalamin) (mg/kg)	0.13
Vit. E (mg/kg)	600	Betacarotene (mg/kg)	14
Vit. C (mg/kg)	410	Vit. B3 (Niacine) (mg/kg)	136.5
Vit. B1 (Thiamin) (mg/kg)	12.2	Biotin (mg/kg)	2.94
Vit. B2 (Riboflavin) (mg/kg)	44.1	Folic-acid (mg/kg)	11.3
Vit. B5 (Pantothenic-acid) (mg/kg)	49.9	Choline (mg/kg)	2800

OTHER GUARANTEES			
Starch (%)	31.1	Omega-6 (%)	3.84
Dietary fiber (%)	13	EPA + DHA (%)	0.5
Linoleic-acid (%)	3.66	Green tea polyphenols (mg/kg)	150
Arachidonic-acid (%)	0.07	Lutein (mg/kg)	5
Omega-3 (%)	1.09	Lycopene (mg/kg)	6.5
Chondroitin sulphate + Glucosamine (mg/kg)	1000	L-Carnitine (mg/kg)	200

CALCULATED METABOLISABLE ENERGY			
Energy (NRC 85) (kcal/kg)	3697	Energy (NRC 2006) (kcal/kg)	3876

FEEDING GUIDELINES

- 24H - Recommended daily quantities				
Cat's weight	3 kg	4 kg	5 kg	6 kg
IDEAL WEIGHT	44g 24g + 1 cup	54g 34g + 1 cup	63g 44g + 1 cup	72g 52g + 1 cup
OVERWEIGHT	35g 16g + 1 cup	43g 24g + 1 cup	50g 31g + 1 cup	57g 38g + 1 cup

Kibbles only / Croquettes seules / Ausschließlich Trockenration / Droogvoeding
 CUP / CU / COUP / CUP
 Kibbles + 1 pouch "Royal Canin Ageing 12+" / Croquettes + 1 sachet "Royal Canin Ageing 12+" / Trockenration + 1 Frischbeutel "Royal Canin Ageing 12+" / Droogvoeding + 1 portieverpakking "Royal Canin Ageing 12+"

*Taking into account cats' weight



WEIGHT MAINTENANCE

In some senior cats, the level of activity reduces with age, which leads to weight gain. **AGEING STERILISED 12+** contains a moderate level of fat to help maintain an ideal body condition.



HEALTHY AGEING COMPLEX

A patented complex of antioxidants including lycopene and Omega - 3 fatty acids to support the body systems through the ageing process.

* France, patent N° EP1146870



RENAL HEALTH

Helps support renal health thanks to an adapted phosphorus level.



URINARY HEALTH

Formulated to help maintain health of an adult cat's urinary system.



AGEING

12+
years

Senior cats over 12 years old



INGREDIENTS

COMPOSITION

Meat and animal derivatives, cereals, vegetable protein extracts, oils and fats, derivatives of vegetable origin, minerals, various sugars, molluscs and crustaceans.

ADDITIVES (PER KG)

Nutritional additives: Vitamin D3: 300 IU, E1 (Iron): 4 mg, E2 (Iodine): 0.34 mg, E4 (Copper): 2.7 mg, E5 (Manganese): 1.3 mg, E6 (Zinc): 13 mg.

ANALYTICAL CONSTITUENTS

Protein	9.5%
Fat content	4%
Crude fibres	1.1%
Crude ash	1.2%

AMINO ACIDS			
Taurine (%)	0.11	Methionine (%)	0.15
Arginine (%)	0.45	Methionine + cystine (%)	0.3
Lysine (%)	0.5		

MINERALS			
Calcium (%)	0.15	Copper (mg/kg)	4
Phosphorus (%)	0.13	Iron (mg/kg)	30
Sodium (%)	0.13	Manganese (mg/kg)	2
Chloride (%)	0.2	Zinc (mg/kg)	22
Potassium (%)	0.17	Selenium (mg/kg)	0.2
Magnesium (%)	0.015	Iodine (mg/kg)	0.4

VITAMINS			
Vit. A (IU/kg)	45000	Vit. B6 (Pyridoxine) (mg/kg)	2
Vit. D3 (IU/kg)	320	Vit. B12 (Cyanocobalamin) (mg/kg)	0.02
Vit. E (mg/kg)	105	Vit. B3 (Niacine) (mg/kg)	20
Vit. C (mg/kg)	42	Biotin (mg/kg)	0.04
Vit. B1 (Thiamin) (mg/kg)	2	Folic acid (mg/kg)	0.5
Vit. B2 (Riboflavin) (mg/kg)	2	Choline (mg/kg)	740
Vit. B5 (Pantothenic-acid) (mg/kg)	4		

OTHER GUARANTEES			
Starch (%)	-	Omega-3 (%)	0.2
Dietary fiber (%)	1.25	EPA + DHA (%)	0.155
Linoleic acid (%)	0.9	L-Carnitine (mg/kg)	-
Arachidonic acid (%)	0.04	Lutein (mg/kg)	1.1
Omega-6 (%)	1	Glucosamine + Chondroitine (mg/kg)	228

CALCULATED METABOLISABLE ENERGY			
Energy (NRC 85) (kcal/kg)	820	Energy NRC 2006 TDF (kcal/kg)	949



JOINT HEALTH EPA/DHA

Helps maintain healthy joints thanks to a high level of EPA/DHA fatty acids.



INSTINCTIVELY PREFERRED

Formulated to match the optimal Macro Nutritional Profile instinctively preferred by ageing cats.



RENAL HEALTH

Adapted phosphorus content.

FEEDING GUIDELINES

24H Feeding instructions

Weight	Pouches only	OR	1 pouch + Kibbles*
3 kg	2		22 g
4 kg	2 + 1/2		31 g
5 kg	3		40 g
6 kg	3 + 1/2		48 g

* ROYAL CANIN® "Ageing 12+"



FELINE HEALTH NUTRITION RANGE



REG. NO. V16307, V16839, V12214, V12212, VOUTDOORDRY, V16645, VSAVOUREXIGENTDRY, V12727, V23337, V21617, V21616, V22709, V23335, V23334, V24830, VSTERILISEDDRY, V25139, V32060 ACT 36 (1947)



FOR MORE INFORMATION, CONTACT US:

0860 63 00 63 | INFO@ROYAL-CANIN.CO.ZA | WWW.ROYALCANIN.COM/ZA